

THE OFFICIAL VISITOR GUIDE

# BIG SPRING

T E X A S



365

**DAYS OF ADVENTURE**

RECREATION | ARTS & CULTURE | SHOPPING | DINING



4

About Us



8

Parks and Meeting  
Facilities



12

Shopping and  
Entertainment



16

Tastes of  
Big Spring



18

Museums

# TABLE OF CONTENTS



# VISIT BIG SPRING TEXAS



20

Map / Index



22

For the Family and  
Hotel Information



26

History and Culture



32

Restoration



36

Annual Events



## **BIG SPRING** | THE CROSSROADS OF WEST TEXAS

Big Spring sits in a rocky gorge between two high foothills of the Caprock escarpment in West Texas. The northern limit of the Edwards Plateau and the southernmost hills of the Caprock converge in Big Spring. It derives its name from the nearby “big spring” in Sulpher Draw, which was a watering place for coyotes, wolves, and herds of buffalo, antelope, and mustangs; the spring was a source of conflict between Comanche and Shawnee Indians and a campsite used by early expeditions across West Texas.

Signal Mountain, ten miles southeast of Big Spring, was a landmark used by early cattlemen. In 1849 Captain Randolph B. Mary’s expedition reached Big Spring on the return trip from Santa Fe and marked it as a campsite on the Overland Trail to California. As a midpoint in West Texas, Big Spring delivers a mixture of yesterday, today, and tomorrow that welcomes the native and the newcomer alike. It is the location that brings you here, the unique beauty that gives you pause, and the kindness of the community that will make you stay.

**Important Information:** The City of Big Spring is located at the intersection of Interstate 20 and US Highway 87 and is surrounded by over one million people within a hundred mile

radius. We are approximately 40 miles east of Midland, 80 miles north of San Angelo, 100 miles west of Abilene and 95 miles south of Lubbock.

Midland International Airport is the closest major airport and is served by Southwest Airlines, American Airlines, and Continental Airlines. Private and corporate aircraft can fly directly into the Big Spring McMahon-Wrinkle Airport.

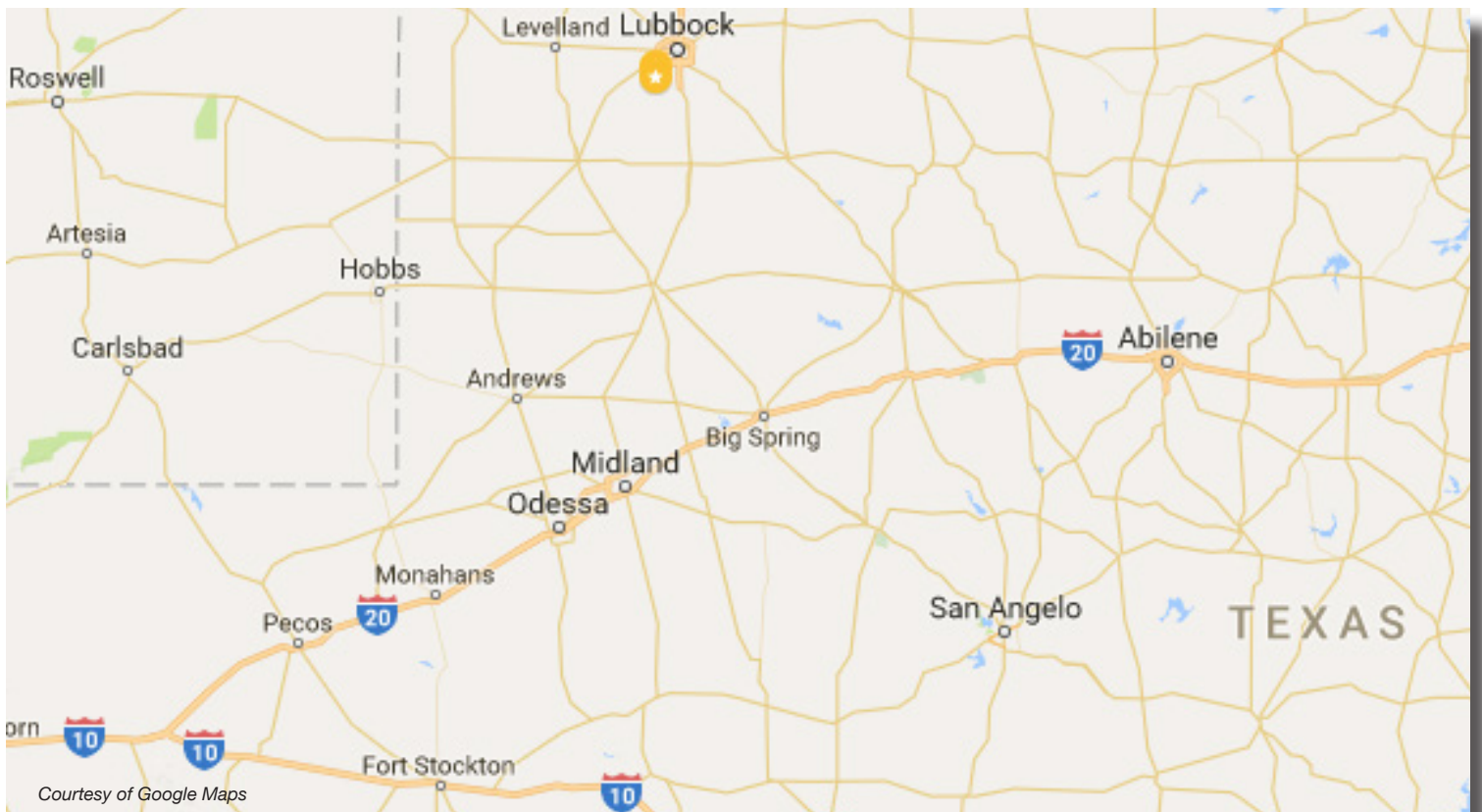


### **LOCATION**

113 & 115 East Third Street  
Big Spring, TX 79720

### **CONTACT**

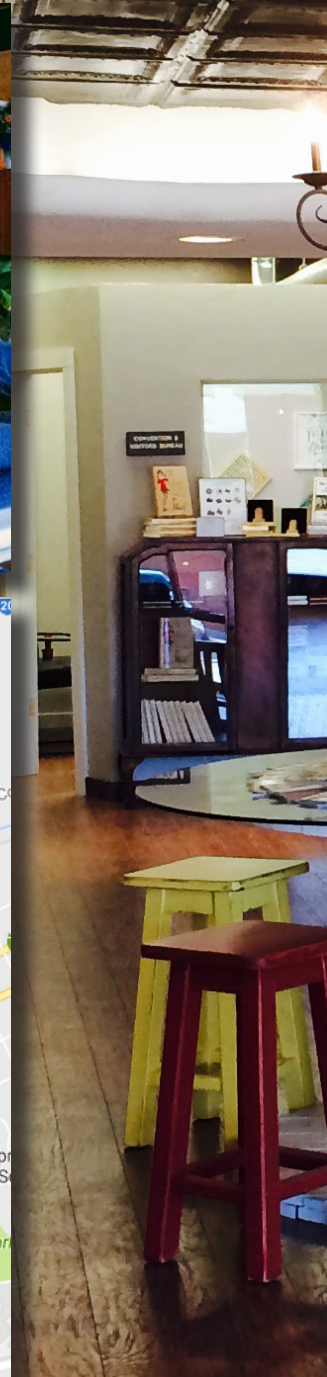
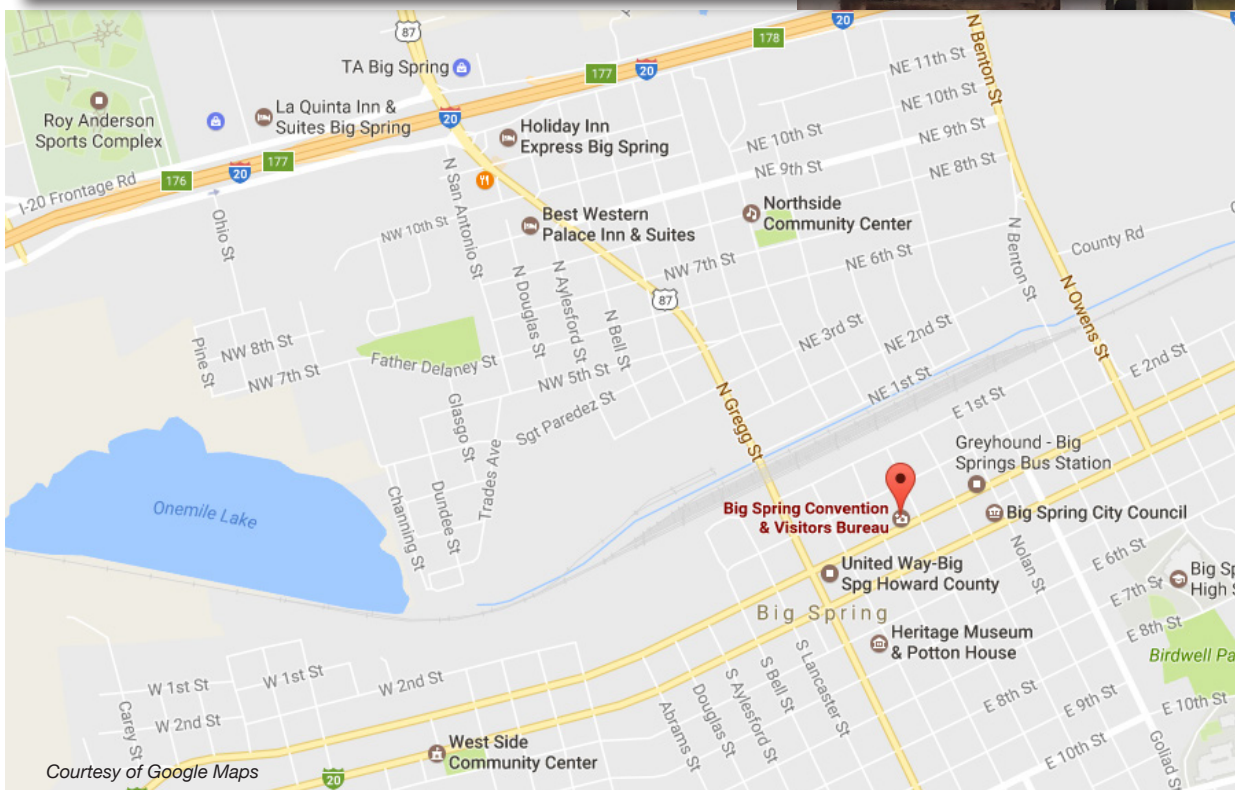
Toll Free | 866.430.7100  
Phone | 432.263.8235  
Fax | 432.267.7431  
Email | [info@visitbigspring.com](mailto:info@visitbigspring.com)  
[www.VisitBigSpring.com](http://www.VisitBigSpring.com)



# VISITORS CENTER | THE 411

The Big Spring Visitors Center is located in Downtown Big Spring on the historic Bankhead Highway. We have information on everything about Big Spring as well as information on different towns in Texas and surrounding States. The Visitors Center was opened in January 2015 and is proud to be displayed in a renovated building that had once been vacant.

Open 8am-5pm, Monday-Friday and houses a Big Spring gift shop.







# PARKS

## COMANCHE TRAIL PARK

Comanche Trail Park was built during the 1930s by the Civilian Conservation Corp and is a 136-acre park owned and operated by the City of Big Spring. The park has five picnic pavilions, three playground areas, a baseball/softball field, walking/jogging trails, the Russ McEwen Family Aquatic Center, Comanche Trail Lake, amphitheater, nine tennis courts, a golf course, and a thirty-six hole disc golf course.

The 6,000 seat amphitheater located in Comanche Trail Park was also built by the Civilian Conservation Corp in 1930 and is the venue for the Annual Fourth of July Celebration, Pops in the Park, held on July 3<sup>rd</sup>, as well as many other community concerts and events.

## COMANCHE TRAIL GOLF COURSE

Comanche Trail Golf Course is an 18-hole golf course that is open seven days a week year round. The course is tucked against the hills on the south end of Big Spring, just five

minutes from Interstate 20. The course is the only rolling hills golf course in West Texas and has recently undergone extensive renovations.





## COMANCHE TRAIL LAKE

Enjoy fishing, picnicking, and feeding the ducks at the beautiful Comanche Trail Lake. Canoes and kayaking are allowed on Comanche Trail Lake, along with boats using an electrical powered trolling motor.

## ROY ANDERSON SPORTS COMPLEX

The Roy Anderson Sports Complex is a fantastic addition to the City of Big Spring Parks Department. It provides a recreational sports facility to the citizens and includes 7 softball fields, 2 baseball fields, 5 soccer fields, 2 football fields, and 1 practice field. New concession stands, restrooms, playground and picnic tables add to the improvement of the facility.

## BIG SPRING STATE PARK

Big Spring State Park is 382 acres located within the city

limits of Big Spring in Howard County. Dramatic views from the Civilian Conservation Corp- built loop road is one of the featured attractions of the park. In the early morning and sunset, joggers, walkers, and cyclists circle the loop, enjoying these views as they exercise. Enjoy stargazing or watching the sunset off of the 200- foot bluff. Other activities include picnicking, nature study and sightseeing.

## MOSS CREEK LAKE

Moss Creek Lake was constructed in 1938 by the City of Big Spring with help from the Army Corp of Engineers. The City of Big Spring is proud to offer approximately 640 acres for recreation use. There are 26 sheltered campsites and pavilions for reservations. Recent additions include a playground, beach swimming area, and ATV trails.

## OTHER NEIGHBORHOOD PARKS

Jefferson Park, ABC Park, Birdwell Park, Morgan Park, and Bert Andries Park



# MEETING FACILITIES

## DORA ROBERTS COMMUNITY CENTER

100 Whipkey Dr | 432-264-2323

Dora Roberts Community Center is located on the bank of the Comanche Trail Lake and has facilities and accommodations to make your meeting or party enjoyable and successful. There are 4 rooms available to rent that will accommodate groups of up to 300 people.



The Ballroom is 3,600 sq ft and is large enough for dances, dinner parties, and weddings. The beautiful Lake Room overlooks the lake and is

ideal for showers and receptions. Two other rooms: the Classroom and the Fireplace Room are available for smaller gatherings. The outdoor pavilion is perfect for an outdoor party or wedding.

## DOROTHY GARRETT COLISEUM

The Coliseum is located at the northwest corner of the Howard College Campus, on the corner of Kentucky Way and Birdwell Ln. | 432-264-5045

Dorothy Garrett Coliseum – a 90,000 square foot facility is more than a coliseum. It is a multifaceted structure comprised of three major elements under one roof that includes a 17,000 square foot arena, meeting room/exhibit area and athletic complex. The pride of the coliseum, the area, is surrounded by over 4,000 contoured seats, each with an unobstructed sight line to the floor. For events

such as concert, an additional 1,500 portable seats can be placed on the arena floor. Possibly the most versatile area of the coliseum is the East Room. This large room measures 120 feet by 36 feet, and can be divided into six smaller rooms each 20 by 36 feet. Each section can set up to 100 persons in a lecture-type meeting or 40 in a dining arrangement. Used as one larger room, it can seat up to 600 lecture style or 300 banquet style.

## OTHER EVENT VENUES

Big Spring Amphitheater | (432) 264-2323

Big Spring Country Club | (432) 267-8241

Blue Ribbon Café | (432) 605-5011

Bowl-A-Rama | (432) 267-7484

Comanche Trail Park Pavilions | (432) 264-2323

Dorothy Garrett Coliseum, Howard College | (432) 264-5045

Heart of the City Plaza | (432) 264-2323

Howard College Cactus Room | (432) 264-5000

Hotel Settles | (432) 267-7500

Howard County Fair Barns | (432) 816-7808

Kokopelli's | (432) 264-0538

Skateland Reloaded | (866) 808-7995

Texas RV Park | (432) 267-7900

The Hardware Store & Courtyard | (432) 263-6514

The Party Place | (432) 263-3461

Velasco's at Moss Creek Ranch | (432) 268-3931

VPW | (432) 263-3437

Welch Reception Center | (432) 267-6331

*Moss Creek Ranch*



*Welch Reception Center*



# BIG SPRING

# Entertainment

## **RUSS McEWEN FAMILY AQUATIC CENTER**

911 E. Golf Course Rd 432-264-0037

\$5 for ages 3 and up

Open during the summer season, please see page 22 for more information.

## **BIG SPRING BOWL-A-RAMA**

3318 E. Interstate 20

432-267-7484

[www.bigspringbowlarama.com](http://www.bigspringbowlarama.com)

Big Spring Bowl-A-Rama is a beautiful non-smoking 24 lane center, owned and operated by John and Diana Dodd since December 2007. Lots of video and amusement games for hours of entertainment. Great lane conditions with state-of-the-art score keeping technology, automatic bumper guards for the little ones and a professional, attentive staff. Big Spring Bowl-A-Rama provides the best bowling experience for all ages. The snack bar has a wide range of items on the menu. Don't forget to order one of our delicious pizzas, or an appetizer platter.

## **CINEMARK CINEMA 4**

Cinemark Cinema 4 located inside Spring Town Plaza

at 1801 E FM 700

432-263-2232

[www.cinemark.com/west-texas/cinemark-cinema-4](http://www.cinemark.com/west-texas/cinemark-cinema-4)

## **SANDHILL CRANE OBSERVATORY WEST**

3rd Street, right onto Jones Street, West on Sgt Paredez Street, left on Channing.

Best viewing times are mornings and evenings in late October.



## SKATELAND RELOADED

2906 W. 8th Street | 325-236-3149 | [www.facebook.com/Skatelandreloaded2015](http://www.facebook.com/Skatelandreloaded2015)

Skateland Reloaded has been updated and is ready for families and kids who are ready together skate on!!  
We have a concession available with snacks and drinks, we play all kinds of different music to skate to.  
Come in and have a great time skating with your family and friends!!

## KIDZ ZONE PLAY AREA

Located in Comanche Trail Park

## DOWNTOWN BIG SPRING ENTERTAINMENT

### **The Train Car Cigar Bar**

100 S Main Street | 432-270-6113 | [Facebook.com/TheTrainCar](http://Facebook.com/TheTrainCar)

Monday-Thursday: 3:00PM-11:00PM Friday and Saturday:10:00AM-2:00AM Sunday:10:00AM-2:00AM

### **Lumbre Bar and Grill**

322 Runnels St | 432-606-5039

Tuesday-Thursday: 5:00PM-9:00PM Friday and Saturday:5:00PM-11:00PM

### **The Pharmacy Bar**

Located inside Hotel Settles at 200 E.3rd Street | 432-267-7500

Monday-Thursday: 5:00PM-11:00PM Friday and Saturday: 5:00PM-12:00AM Sunday: 5:00PM-9:00PM

[Hotelsettles.com/dining/pharmacy-bar-parlor/](http://Hotelsettles.com/dining/pharmacy-bar-parlor/)

### **Desert Flower Art Gallery**

123 S. Main Street | 432-270-0290

Monday-Saturday: 4:00PM-2:00AM Sunday: 4:00PM-12:00AM

[Desertflowerartbar.com](http://Desertflowerartbar.com)

# BIG SPRING

# Shopping Guide

## SPRING TOWN PLAZA

1801 E FM 700, 432-267-3853

Bealls Department Store, 432-263-0273

Suggs Hallmark, 432-263-4444

Sears, 432-267-1124

Seams So Nice, 432-267-9773

Attitudes Hair Salon, 432-263-2701

Cinemark Cinema 4, 432-263-2232

Hollywood Nails, 432-263-1683

Blissful Boutique, 432-714-4448

The Varsity Grill

The Wellness Center, 432-466-3436

Evitas, 432-267-7121

Gary B's Music, 432-714-4277

## BIG SPRING MARKET PLACE

111 Marcy Drive

Dollar Tree, 432-264-6375

The Shoe Department, 432-264-1512

Maurice's, 432-264-7516

Regis Salon, 432-263-1111

Cash Store, 432-267-1118

Pro Nails, 432-263-6245

Sally Beauty Supply, 432-264-6118

Game Stop, 432-264-1493

## ANTIQUES

Alamo Antiques, 212 Runnels St., 432-270-0571

Antiques Etc, 1701 S Gregg St., 432-213-1377

## JEWELRY

The Karat Patch, 997 E. FM 700, 432-267-1480

Chaney's Jewelry, 1706 Gregg St., 432-263-2781

## FURNITURE

Allan's Furniture, 202 Scurry St., 432-267-6278

Elrod's Furniture, 2309 Scurry St., 432-267-8491



## **BOUTIQUES, GIFTS, FLOWERS**

Merle Norman, 1210 Gregg St., 432-267-6161  
Inspirations Flowers & Gifts, 1410 Scurry, 432-263-8323  
Faye's, 1013 Gregg Street, 432-267-2571  
Floral Designs by Lupe 606 S. Gregg, 432-517-4919  
Loco Flamingos, 1912 Scurry St., 432-213-1147  
Blue Eyed Buffalo, 223 S. Main St., 432-714-4716  
Jaybug's Boutique, 305 S. Main St., 432-466-3393  
Queens of the Dude Ranch, 204 Main St., 817-825-9717  
Splurge, 308 Scurry St, 432-935-6477  
Dazzling Décor, 1304 Scurry St, 432-264-6000  
The Crowned Bird, 406 E. Marcy Dr, 432-816-5499  
Southern Blush Boutique, 1203 South Scurry St, 432-517-4723  
Lula Blu Boutique, 2112 Scurry St, 432-714-4544

## **SPA SERVICES**

Uptown Salon and Day Spa, 600 Runnels, 432-267-1544  
Serenity Spa, 1113 Scurry St., 432-264-6651  
Body Focus Spa, 1700 W. Fm 700, 432-264-1900  
Hippy Chic, 2112 Scurry St., 432-267-6022  
My Favorite Place, 1800 S. Scurry St., 432-263-3283  
Christy's Hair Studio and Spa, 100 E. 3rd St., 432-714-4577

## **CORONADO PLAZA**

**2602 Gregg St.**

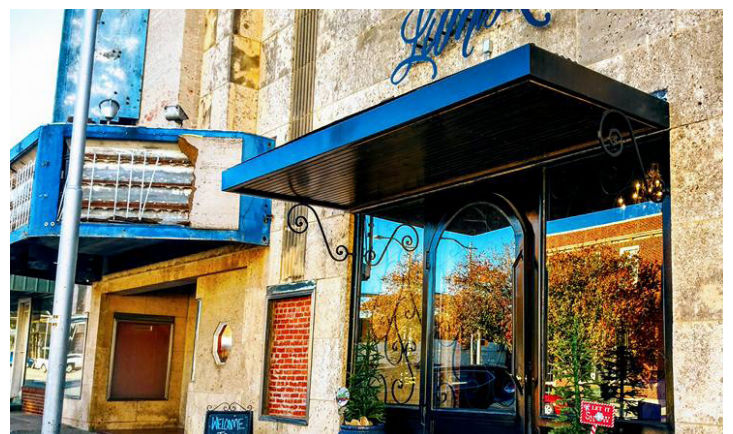
Hibbett Sports, 432-264-7483  
Dollar General, 432-264-0794

## **OTHER**

Sew Unique, 1612 E. 3rd St., 432-264-7216  
Music-N-More Resale Shop, 504 W. 3rd St, 432-935-1893  
Robbins Sewing Box, 1703 S. Gregg St., 432-213-7791  
Kiss My Rack BBQ Supply, 305 S. Main St., 432-264-0253  
Ward's Boots Western Wear, 1109 S Gregg Street, 432-271-3085

# THE TASTES

# of Big Spring



# RESTAURANTS

<p><b>**Alberto's Crystal Café</b> 300 N. Gregg St 432-267-2310 Tues - Sat. 11am-3pm &amp; 5pm-9pm Sun 11am - 3pm</p>	<p><b>**Al's &amp; Son Bar-B-Q</b> 1810 S. Gregg 432-267-8921 Tues - Fri 11am -8pm Sun 11am - 3pm</p>	<p><b>Carlos Restaurant &amp; Bar</b> 308 NW 3rd 432-267-9141 Mon - Thurs 11am - 2pm &amp; 5pm - 9pm Fri 11am - 10:30pm Sat 4:30pm - 10:30pm</p>	<p><b>Casa Blanca</b> 1005 Lamesa Hwy. 432-263-1162 Tues - Sat 11am - 1:30pm &amp; 5pm - 8:30pm</p>
<p><b>**Crispy's</b> 1904 Birdwell 432-517-4520 Tues-Thurs 10:30am-8:30pm Fri &amp; Sat 8:30pm-8:30pm Sun 10:30am-2pm</p>	<p><b>Country Fare Restaurant</b> 704 W I H 20 432-264-4433 24 hours/7days a week Breakfast, Lunch and Dinner Buffet</p>	<p><b>**Cowboy's Steakhouse</b> 404 E. FM 700 432-263-0181 Sun - Wed 11am - 8:30pm Thurs - Sat 11am - 9pm</p>	<p><b>Dell's Café</b> 1608 E. 4th 432-267-9323 Mon-Fri 6am - 2pm</p>
<p><b>Denny's</b> 1710 E. 3rd St. 432-267-2201 24 hrs/7days a week</p>	<p><b>Dragon China Buffet</b> 1300 S. Gregg 432-268-8888 Mon-Thur 10:30am-10pm Fri &amp; Sat 10:30am-11pm Sun 10:30am-10pm</p>	<p><b>**El Nopal</b> 800 Gregg 432-267-1499 Wed-Sat 7am-2pm</p>	<p><b>Evita's Mexican Cuisine</b> 1801 E FM 700 #E7 432-267-7121 Mon-Sun 6am-9pm</p>
<p><b>**Dickey's BBQ</b> 2602 S. Gregg St Suite 8 432-714-4733 Mon-Sat 11am-8pm Sun 11am-3pm</p>	<p><b>**Blue Ribbon Café</b> 505 Scurry St 432-606-5011 Tues-Sat 11am-2pm</p>	<p><b>Tacos Locos</b> 206 S. Main St 432-935-6730 Mon-Fri 10:30am-7pm</p>	<p><b>Joe's Italian Bistro</b> 1513 E. FM 700 432-264-0118 Sun-Thurs 11am-9pm Fri-Sat 11am-10pm</p>
<p><b>Wild West Wingz</b> 1506 E. 4th 432-517-4368 Mon-Thurs 11am-9pm Fri-Sat 11am - 12am Sun 2pm-9pm</p>	<p><b>Hunan Restaurant</b> 1201 Gregg 432-267-4509 Mon-Fri 11am-2:30pm &amp; 5pm-9:30pm Sat - Sun 11am - 9:30pm</p>	<p><b>**Papa Chon's</b> 310 Owens 432-264-1711 Mon-Sat 11am-9pm Sun 11am-3pm</p>	<p><b>Wagon Wheel Drive In</b> 2010 Scurry St 432-267-2851 Mon-Sat 11am-8pm</p>
<p><b>Texas Cajun Café</b> 802 W I H 20 432-264-7686 Sun-Sat 11am-9pm</p>	<p><b>Cornerhouse Coffee</b> 1701 Scurry St Mon-Sat 7am-9pm</p>	<p><b>TJ's Steakhouse</b> 2104 West Service Road Interstate 20 432-263-1651 Mon-Sat 5pm-10pm</p>	<p><b>Red Mesa</b> 2401 S. Gregg St 432-517-4601 Mon.-Thur 11am-8:30pm Fri-Sat 11am-9pm</p>
<p><b>Settles Grill</b> 200 E. 3rd St. 432-267-7500 Mon -Sat 7am-10pm Sun Brunch 7am-2pm</p>	<p><b>Spanish Inn</b> 200 N. W. 3rd 432-267-9340 Tues-Fri 11am-2pm &amp; 5pm-9pm Sat 11am-9pm</p>	<p><b>Lumbre Bar and Grill</b> 322 Runnels St 432-606-5039 Tues-Thurs 5pm-10pm Fri &amp; Sat 5pm-12am</p>	<p><b>**McAlisters Deli</b> 1010 Lamesa Highway 432-558-6468 Sun-Thurs 10:30am-9pm Friday-Sat 10:30am-10pm</p>

\*\*CATERING AVAILABLE

## HANGAR 25 AIR MUSEUM

Hangar 25 Air Museum is housed in a fully restored WWII era hangar. The mission of Hangar 25 Air Museum is to promote education through the collection, preservation and exhibition of the history of the Big Spring Army Air Force Bombardier School and Webb Air Force Base while honoring all veterans, past and present. Often our museum is staffed by retired veterans and civil service employees who are ready to share their memories of the hangar when it was a hub of activity, first, during WWII as a part of the Big Spring Bombardier School and later as a part of Webb Air Force Base, supporting the training of over 10,000 pilots from 1952 to 1977.

Today, Hangar 25 Air Museum is very much a Big Spring, Texas community icon, focused on displaying the proud heritage of a great city and educating our fellow citizens of all ages, on the military traditions that have been such an important part of local history. We encourage anyone with a connection to Big Spring, Texas, or Big Spring AAF Bombardier School or Webb Air Force Base to visit and experience for yourself, the history, heritage, and the honor that is Hangar 25 Air Museum. Incidentally, since opening our doors in May of 1999, Hangar 25 Air Museum has hosted more than 50,000 visitors from all 50 states and over 30 foreign countries.



## HERITAGE MUSEUM

The Heritage Museum was once the home to pioneer Dora Roberts. The museum was organized in 1971 and was renovated and expanded in 1992. The Museum's permanent exhibits tell the story of Big Spring's diverse history. These informative displays range from early Native American life to the oil industry in West Texas. The temporary exhibit gallery displays the work of local artists and traveling exhibits from around the nation.



# MUSEUMS



and the Tourist Development Council of the City of Big Spring in 1975.

The Potton House is open for tours by appointment. Please call 432-267-8255 to set up a tour.

## BIG SPRING VIETNAM MEMORIAL

The Big Spring Vietnam Memorial is located in Big Spring Texas, on the edge of the campus of Southwest Collegiate Institute for the Deaf, overlooking the former Webb Air Force Base.

The Big Spring Vietnam memorial was dedicated in 1991 and stands in memory of those killed in action during the Vietnam War. A UH-1 Huey Helicopter, F-4E Phantom II Jet, Abrams Tank, Cobra Helicopter, and Memorial Chapel are located on the memorial grounds.



## POTTON HOUSE

Although the Big Spring long was an oasis for travelers, the growth of the town was due to the coming of the railroad. By 1901, the dusty cowtown was beginning to feel stability. The tent city around the spring had disappeared and in its place permanent residences dotted the town.

On the west end emerged a home unlike the prevalent frame houses. This residence will be a lasting tribute to Big Spring's turn of the century architecture, the Joseph Potton home at 200 Gregg Street. The house was built as an investment by Mr. Potton and was leased until his retirement in 1912. Mr Potton was a Master Mechanic for the Texas & Pacific RR, an early civic leader and proud owner of the first car in Big Spring. Mrs Potton was active in St. Mary's Episcopal Guild and served tea in the English tradition every afternoon in her charming, ornate, quasi-mansion.



The house was kept in the family after the Pottons' death as their daughter, Mrs. Henry Hayden and her family occupied the structure in later years. In recent years, the grandchildren have maintained it daily even though it was vacant. It was purchased with a grant from the Dora Roberts Foundation

### HANGAR 25 AIR MUSEUM

1911 Apron Drive

432.264.1999

[www.hangar25airmuseum.org](http://www.hangar25airmuseum.org)

### HERITAGE MUSEUM

510 Scurry Street

432.267.8255

[www.heritagebigspring.com](http://www.heritagebigspring.com)

### POTTON HOUSE

200 Gregg Street

432.267.8255

### BIG SPRING VIETNAM MEMORIAL

432.263.7361

# BIG SPRING, TX

1st Ave	A3	Cindy Ln	D3
2nd St	A3; B3	Circle Dr	C2
3rd St	B3	Clanton St	B3
4th St	B3	Colby Ave	D2
5th Ave	B3	Cole Ln	D3
6th St	B3	Colgate Ave	D2
7th St	B3	College Ave	D2
8th St	B3	College Ave	D2
Abilene Ave	B3	Columbia St	D2
Abrams St	B2	Commanche Dr	B3
Adams Dr	D2	Connally St	B4
Adams St	B4	Corbell Rd	D1
Airbase Rd	B3	Co Rd 21	A1
Airport Rd	A3	Cornell Ave	D2
Alabama St	D2	Coronado Ave	C3
Alamesa Dr	B4	Cottonwood St	B2
Albrook Dr	B3	Country Club Rd	C4
Algerita St	B2	County Rd	C1
Allendale Rd	D2	Courtney Pl	C3
Alma Cir	C4	Craigmont Dr	C3
Amber Ln	C1	Creighton St	B2
Andree St	B2	Crestline Rd	C3
Andrews Hwy	A1	Curtiss Dr	A3
Andrews Ln	C1	Cypress St	B4
Anna St	B2	Dallas St	C3
Ann Dr	D3	Daphne Rd	D3
Apache Dr	B3	Dartmouth Ave	D2
Apron Dr	A3	Dayton Rd	C2
Arizona St	D2	Dillworth St	B2
Armstrong St	B3	Dixie Ave	C2
Arnett Rd	D1	Dixon St	B4
Arroyo Dr	D3	Donley St	C2
Arburo Ave	D2	Douglas St	A3; C2
Austin St	C2-3	Dow Dr	B3
Avalon Ct	C3	Drexel Ave	D2
Ave A	B3	Driver Rd	D4
Ave B	B3	Duke Ave	D2
Ave C	B3	Dundee St	B2
Ave D	B3	Duquoin Pl	B4
Ave E	B3	E 1st St	C2
Avion St	B3	E 2nd St	C2
Avondale Dr	C3	E 3rd St	C2
Aylesford St	C2	E 5th St	C2; D2
Barnes Ave	D2	E 6th St	C2
Baylor Blvd	D2	E 7th St	C2
B Bobs Trl	D3	E 8th St	C2
Beats Crk	C1	E 9th St	C2
Beechnut St	B4	E 10th St	C2
Bell St	A3	E 11th Pl	C2; D2
Belvedere Rd	C3	E 11th St	C2
Bennett Cir	C3	E 12th St	C2
Benton St	C2	E 13th St	C2
Bethel Dr	A3	E 14th St	C2
Bilger St	C4	E 15th St	C2
Birch St	A3	E 16th St	C2; D2
Birdwell Ln	D2-3	E 17th St	C2-3; D2
Blackmon Ave	D2	E 18th St	C2-3; D2
Bluebird St	B3	E 19th St	C3
Bluebonnet Ave	C2	E 20th St	C3
Boatler Rd	C4	E 21st St	C3
Boeing Dr	A3	E 22nd St	C3
Boulder Dr	B4	E 23rd St	C3; D2
Boykin Rd	C4	E 24th St	C3; D3
Bracken Ln	C4	E 25th St	D3
Brent Dr	D2-3	E Airpark Dr	A3
Broadway St	B3	Edgemere Rd	D2
Brown St	B2	Edwards Blvd	C3
Bucknell Ave	D1	Elder St	B4
Cactus Dr	B3	Elgin St	C2
Callahan Rd	C4	Elm Dr	A3
Calvin St	B4	E Marcy Dr	C3; D1-2
Campus Dr	D2	Ent Dr	B3
Canary St	B3	Fairchild Dr	B4
Canyon Dr	C3	Father Delaney St	B2
Capri Ct	C3	Fenn Ave	D2
Caprock Cir	D3	Fisher St	D3
Caprock Dr	D3	Fordham Ave	D2
Cardinal St	B3	Franklin St	C1
Carey St	B2	Frazier St	B3
Carleton Dr	B4	Front Ave	A3
Carl St	B4	Galveston St	B2
Carol Dr	D3	Gatesville Rd	C1
Caroline St	B4	George St	D2
Caylor Dr	C2	Glasgo St	B2
Cecilia St	B4	Glenwick Cove	C3
Cedar Rd	B3	Goliad St	C2
Central Dr	D3	Grace St	B4
Channing St	B2	Grafa St	D2
Chanute Dr	B3	Granada Dr	B4
Chaparral Rd	C4	Grant Ave	B2
Cherokee St	B3	Greenbrier Ave	D2
Cherry St	B1	Gunter Cir	B3
Chesnut St	B4	Hacks Valley Rd	C4
Chevy Chase	C3	Hale St	B4
Cheyenne Dr	B4	Hamilton St	B4
Choctaw Dr	B3	Harding St	B3
Christian Rd	C4		



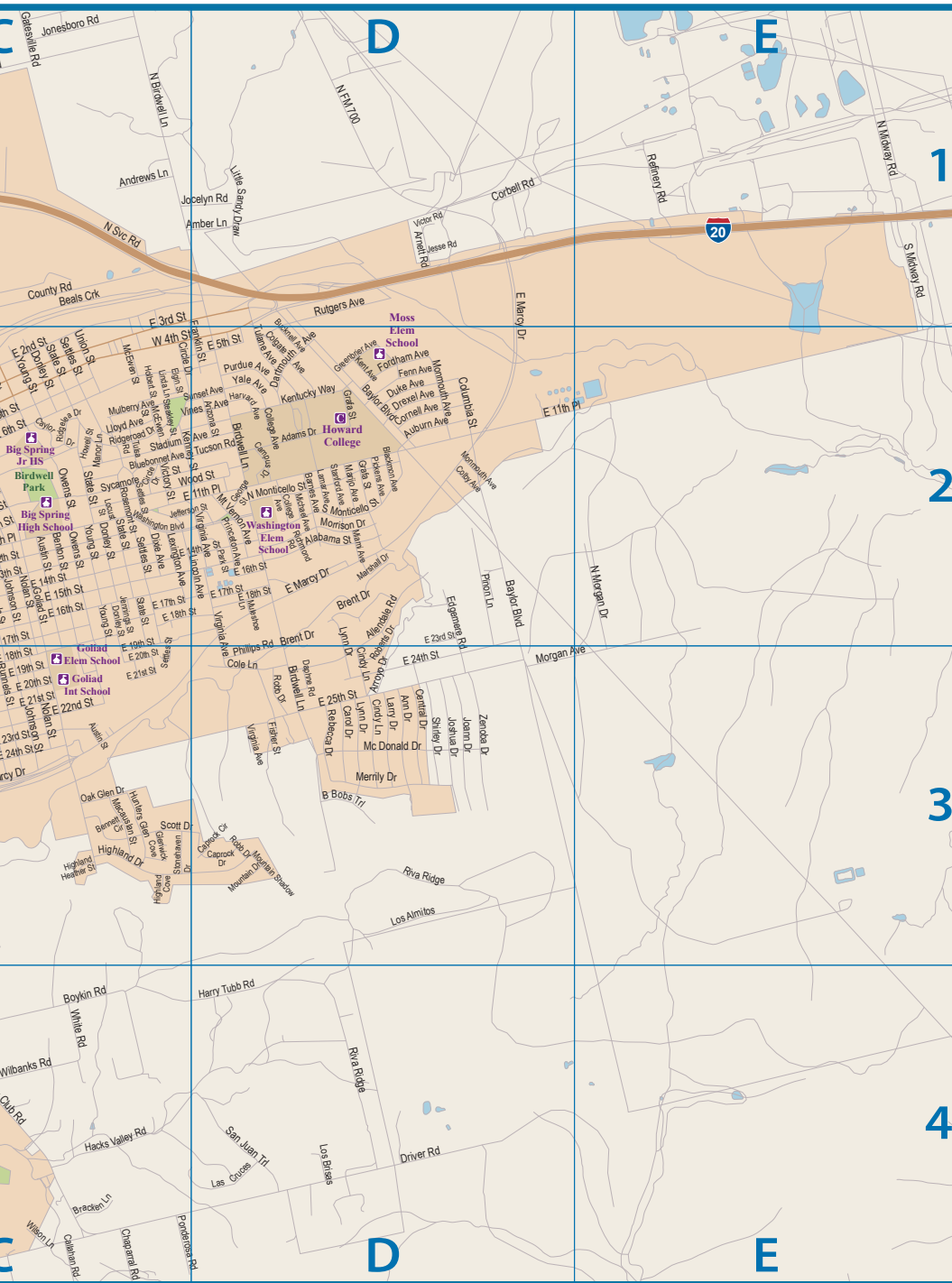
Harry Tubb Rd	D4
Harvard Ave	D2
Hearn St	B4
Hickory St	B4
Highland Cove	B3
Highland Dr	C3
Highland	
Heather St	C3
Hillcrest Ave	B2
Hillside Dr	C3
Hilltop Rd	C1

Holbert St	C2
Howell St	C2
Hunter Glen	B4
Hunters Glen	C3
Indian Hills Dr	B3
Indian Ridge	B3
Jefferson St	C2
Jennings St	C2
Jesse Rd	D1
Joann Dr	D3
Jocelyn Rd	C1

Johansen Rd	C4
Johnson St	C2-3
Jonesboro Rd	C1
Jones St	B2
Joshua Dr	D3
Kelly Cir	B3
Kenney St	C2
Kent Ave	D2
Kentucky Way	D2
Kindle Rd	A3
Kiowa Dr	B3

la Junta Dr	B4
la Loma Ave	C3
Lamar Ave	D2
Lamesa Hwy	B1
Langley Dr	B4
Lark St	B3
Larry Dr	D3
Las Cruces	D4
Laurie St	B4
Lawrence St	B3
Lexington Ave	C2

# MAP AND INDEX



Mt Vernon Ave	D2	Roemer St	B3
Muir St	C4	Rosemont St	C2
Mulberry Ave	D2	Runnels St	C2-3
Muleshoe Ln	D2	Rutgers Ave	D1
N Austin St	C1	Ryon St	C3
Navajo Dr	B3	San Antonio St	B2; C3
N Aylesford St	B1	San Jacinto St	B2
N Bell St	B1	San Juan Trl	D4
N Benton St	C1	S Aylesford St	C2
N Birdwell Ln	C1	S Bell St	C2-3
N Douglas St	B1	S Benton St	C2
NE 1st St	C2	Scenic Dr	B3
NE 2nd St	C2	Scott Dr	C3
NE 3rd St	C2	Scurry St	C2
NE 6th St	C1	Seminole Dr	C3
NE 7th St	C1	Settles St	C2-3
NE 8th St	C1	S Goliad St	C2
NE 9th St	C1	S Gregg St	C2
NE 10th St	C1	S Shepard Ln	C2
NE 11th St	C1	Shirley Dr	D3
NE 12th St	C1	Simler Dr	B3
N FM 700	D1	S Lancaster St	C2-3
N Goliad St	C1	S Main St	C2
N Gregg St	B1; C2	S Midway Rd	D1
N Johnson St	C1	S Monticello St	E2
N Lancaster St	B1	Stadium Ave	D2
N Main St	C1	Stanford Ave	D2
N Midway Rd	E1	State Park Dr	B3
N Monticello St	D2	State St	C2
N Morgan Dr	E2	Steakley St	C3
N Nolan St	C1	Stonehaven Dr	C2
Nolan St	C2-3	Sunset Ave	C2
N Owens St	C1	Sunset Blvd	B2
N Runnels St	C1	Sycamore St	C2
N San Antonio St	B1	Theo St	C4
N Scurry St	C1	Thorpe St	B3
N Svc Rd	C1	Tingle St	B4
NW 1st St	B2	Trades Ave	B2
NW 2nd St	B2	Tucson Rd	D2
NW 3rd St	B2	Tulane Ave	D2
NW 4th St	B2	Tulsa Rd	C2
NW 5th St	B2	Union St	C2
NW 7th St	B2; C1	Utah Rd	B3
NW 8th St	B2; C1	Valley St	B2
NW 9th St	B2; C1	Van Horn Dr	B1
NW 10th St	B1	Vicky St	C4
NW 11th St	B1	Victor Rd	D1
NW 12th St	B1	Victory St	C2
NW 21st St	B1	Vines Ave	C2
Oak Glen Dr	C3	Virginia Ave	D2-3
Oak St	A3	W 1st St	B2; C2
Odessa Dr	B1	W 2nd St	B2; C2
Ohio St	B1	W 3rd St	B2
Oil Mill Rd	A1; B1	W 4th St	C2
Old State	C2	W 5th St	C2
Hwy 80	B2	W 6th St	C2
Oriole St	B3	W 7th St	A2; C2
Osage Rd	B3	W 8th St	B2; C2
Owens St	C2	W 9th St	B3; C2
Oxford	B4	W 10th St	C2
Palm St	B3	W 11th Pl	B2
Parkhill Dr	C4	W 12th St	C2
Park St	D2	W 13th St	B3; C2
Parkway Rd	B3; C4	W 14th St	B3; C2
Peach St	B2	W 15th St	B3; C2-3
Pennsylvania Ave	C2-3	W 16th St	B3; C2-3
Perimeter Rd	A3-4	Wallace St	B4
Perry St	B3	Walnut St	A3
Phillips Rd	D3	Warehouse Ave	B4
Pickens Ave	D2	Warren St	B3
Pine St	B2	Washington Blvd	C2
Pinon Ln	D2	Wasson Rd	B4; C3
Ponderosa Rd	C4	Weaver Rd	B1
Presidio St	B2	Webb Ln	B3
Price St	B2	Westover Rd	C3
Princeton Ave	D2	West St	B3
Purdue Ave	D2	W FM 700	B2
Rainbow Cir	B1	Whipkey Dr	C3
Randolph Blvd	B3	White Rd	C4
Rebecca Dr	D3	Wilbanks Rd	C4
Refinery Rd	E1	Willard St	C4
Rice Rd	B3	Willia St	B2
Richmondale St	B3	Wilson Ln	C4
Richmond Dell	B3	Wilson St	C4
Richmond Rd	D2	Winston St	B4
Rickabaugh Dr	A3	W Marcy Dr	C3
Ridgelea Dr	C2	Wood St	C2
Ridgeroad Dr	C2	Wooten Rd	C4
Ringer St	B3	Wright Ave	B3
Riva Ridge	D3-4	Wright St	A3
Robb Dr	D3	Wyoming St	D1
Roberts Dr	D3	Yale Ave	B2
Robin St	B3	Young St	C2
Rockdale St	B3	Yucca Rd	B3
		Zenoba Dr	D3

Lincoln Ave C2  
Linda Ln C2  
Lindberg St A3  
Little Sandy Draw C1  
Lloyd Ave C2  
Lockhart St B2  
Lockhead Dr A3  
Locust St C2  
Lorilla St B2  
Los Almitos D3

Los Brisas D4  
Lynn Dr D2-3  
Macauslan St C3  
Madison St A3  
Magnolia Ave C2  
Manor Ln C2  
Maple Ave B3  
March Cir B4  
Marjio Ave D2  
Marshall Dr D2  
Mathews Ave C3

McChristian St C4  
McDonald Dr D3  
McEwen St C2  
Meadow Ave B2  
Melrose Ln C3  
Merrily Dr B3  
Mesa Ave B3  
Mesquite St B3  
Miami Ave D2  
Michael Ave D2  
Midland Dr B1

Mishler St B3  
MLK Blvd C2  
Mobile St A3  
Monmouth Ave D2  
Morgan Ave D3  
Morrison Dr D2  
Mountain Dr D3  
Mountain Park Dr B3  
Mountain Shadow D3



# FOR THE FAMILY

## THE RUSS McEWEN FAMILY AQUATIC FACILITY

The Russ McEwen Family Aquatic Facility, located in Comanche Trail Park opened the Summer of 2011. The facility features a concession stand, two slides, a water crossing feature, a kid's splash and play zone, a lazy river, and a sand play area. The aquatic center also has pavilions available for rent as well as shaded areas for the enjoyment of the visitors.

The facility is open during the summer months:

- **Tuesday through Friday from 12 pm to 8 pm**
- **Saturdays from 11 am to 8 pm**
- **Sundays from 1 pm to 8 pm**

The facility is also available for private party rentals.

For current information regarding the aquatic center, including opening and closing dates and pricing, please visit: [www.VisitBigSpring.com](http://www.VisitBigSpring.com) or call 432.264.2323.



**A GEM IN THE HEART OF BIG SPRING, TX**, Hotel Settles is a historic 1930s-era hotel that has been beautifully restored to its original elegance, with stylish details that evoke the charm, craftsmanship and architectural details of an earlier era. This full-service independently owned boutique hotel has a wonderful combination of true Texas hospitality and relaxed elegance, with 65 guestrooms and 15,000 sq. ft. of function space including the opulently restored Grand Ballroom and Lobby.

# HOTEL SETTLES



## **HOTEL SETTLES**

200 East Third Street  
Big Spring, Texas 79720  
(432) 267-7500  
[info@hotelsettles.com](mailto:info@hotelsettles.com)



# HOTEL INFORMATION

HOTEL	# OF ROOMS	MEETING ROOM	DINING	POOL	PETS	BREAKFAST	INTERNET SERVICE
<b>Hotel Settles (Historic Hotel)</b> www.hotelsettles.com 200 East 3rd St., Big Spring, TX 79720 Phone (432)267-7500	65	✓	✓	✓		Restaurant & Bar on Site	Wireless & High Speed
<b>Hampton Inn</b> www.hamptoninn.com 805 W. I-20, Big Spring, TX 79720 Phone (432)264-9800 Fax (432)264-9801	85	✓		✓		Hot Breakfast	Wireless & High Speed
<b>Baymont Inn and Suites</b> www.baymontinns.com/bigspring 917 Lamesa Hwy Big Spring, TX 79720 432-268-0568	72					Continental	Wireless
<b>LaQuinta Inn &amp; Suites</b> www.lq.com 1102 I-20 West, Big Spring, TX 79720 Phone (432)264-0222 Fax (432-264-0840)	73	✓		✓	✓	Hot Breakfast	Wireless
<b>Best Western Palace Inn</b> www.bestwestern.com 915 Lamesa Hwy Big Spring, TX 79720 Phone (432)264-1500 (432)264-1582	60			✓		Hot Breakfast	Wireless & High Speed
<b>Spring City Inn</b> 1109 N. Aylesford (Exit 177) Big Spring, TX 79720 Phone (432) 263-5400 Fax (432)263-5401	66	✓		✓		Continental	Wireless & High Speed
<b>TownePlace Suites by Marriot</b> www.marriot.com/maftb 1011 N. San Antonio Street Big Spring, TX 79720 Phone (432)606-5166 Fax (432)606-5167	107		✓		✓	Hot Breakfast	Wireless
<b>Quality Inn &amp; Suites</b> www.choicehotels.com 300 Tulane (Exit 179) Big Spring, TX 79720 Phone (432) 264-7086 Fax (432)264-7995	65			✓	✓	Hot Breakfast	Wireless & High Speed
<b>Eagles Den and Suites</b> eaglesdensuites.com 901 East Interstate 20 Big Spring, TX 79720 432-288-3788	80						Wireless

<b>HOTEL</b>	<b># OF ROOMS</b>	<b>MEETING ROOM</b>	<b>DINING</b>	<b>POOL</b>	<b>PETS</b>	<b>BREAKFAST</b>	<b>INTERNET SERVICE</b>
<b>Advantage Inn &amp; Suites</b> www.advantageinnbigspring.com 804 W I-20 (Exit 177) Big Spring, TX 79720 Phone (432) 263-5200 Fax (432) 263-5462	<b>50</b>	✓		✓	✓	<b>Continental</b>	<b>Wireless &amp; High Speed</b>
<b>Super 8</b> www.choiocehotels.com 2900 E I-20 (Exit 179) Big Spring, TX 79720 Phone (432) 267-4553 Fax (432) 267-1637	<b>62</b>	✓		✓	✓	<b>Hot Breakfast</b>	<b>Wireless &amp; High Speed</b>
<b>Days Inn</b> www.daysinn.com/bigspring 2701 S. Gregg Big Spring, TX 79720 Phone (432) 267-5237 Fax (432) 263-6542	<b>48</b>			✓	✓	<b>Continental</b>	<b>Wireless &amp; High Speed</b>
<b>Plaza Inn</b> 700 W I-20 (Exit 177) Big Spring, TX 79720 Phone (432) 267-1601 Fax (432) 267-6916	<b>144</b>		✓	✓	✓	<b>Continental</b>	<b>Wireless</b>
<b>Knights Inn</b> www.knightsinn.com 1000 W 4th St Big Spring, TX 79720 Phone (432)935-6757 Fax (469)619-6464	<b>28</b>						<b>Wireless</b>
<b>Motel 6</b> www.motel6.com 600 W I-20 (Exit 177) Big Spring, TX 79720 Phone (432) 267-1695 Fax (432) 267-4048	<b>92</b>			✓	✓	<b>Coffee Only</b>	<b>Dial-Up Available</b>
<b>Budget Inn &amp; Suites</b> 2900 W. Hwy 80 Big Spring, TX 79720 Phone (432)-267-5582 Fax (432)-267-5582	<b>28</b>				✓		
<b>Scottish Inn</b> 1202 E 3rd St. Big Spring, TX 79720 Phone (432)267-2581 Fax (432)268-9037	<b>30</b>				✓		<b>High Speed</b>
<b>Camlot Inn</b> http://Camlotinn.biz 2902 E I-20. Big Spring, TX 79720 Phone (432) 268-9926	<b>20</b>				✓		
<b>Sleep Inn &amp; Mainstay Suites</b> 308 E 12th St. Big Spring, TX 79720 Phone (432) 606-5118	<b>68</b>	✓	✓	✓		<b>Hot Breakfast</b>	<b>High Speed</b>



# HISTORY

## BANKHEAD HIGHWAY

In 2015, the Big Spring Convention and Visitors Bureau was approached by the Texas Historical Commission to be a pilot city for the newly established Texas Historic Roads and Highways Program that was going to first focus on the Bankhead Highway.

Once known as the Broadway of America, the Bankhead Highway's impact on hundreds of Texas communities --

from colossal cities to tiny towns -- remains evident to this day. Upon completion of the highway in the 1920s, businesses and attractions specifically catering to motorists emerged along the transcontinental roadway, which stretched across Texas from Texarkana to El Paso. Fortunately many of these resources remain intact today.

The Bankhead Highway was one of the nation's earliest

transcontinental highways. Its beginnings can be traced back to 1916 when the Bankhead Highway Association was organized to promote the highway's development. The roadway extended from Washington, DC to San Diego, California, by way of Alabama, home of US Senator John H. Bankhead and a major supporter of the highway. Its path crossed approximately 850 miles of Texas, passing through Texarkana, Mt. Vernon, Dallas, Fort Worth, Abilene, Midland, Van Horn, and El Paso, among other communities, and roughly followed US 67 and US 80.

The Bankhead Highway has been known by a variety of names. All or parts of this roadway have been known or designated as SH 1, SH 1A, Broadway of America, US 67, US 80, US 80A, US 180, IH 10, IH 20, and IH 30. Nonetheless, one aspect of its history has remained constant since its creation; the highway has been one of the most important transportation corridors in the state's history and it continues to play an important role in its economy and future development. Many segments continue to serve interstate tourists and commercial traffic, while other sections now cater to a more localized market. The associated built environment reflects this rich history. While some of the buildings and structures continue to be used in their original capacity, others have been repurposed, abandoned, and even demolished. The survivors represent a rich legacy in the history of the state and highway transportation.

In Big Spring, the Bankhead Highway ran right in front of the Historic Municipal Auditorium and the Historic Hotel Settles on Third Street.



# BIG SPRING MUNICIPAL AUDITORIUM

The historical Big Spring Municipal Auditorium was built in 1932 and has served as a center for cultural activity both past and present. The auditorium seats 1,412 people. Famous personalities from the past including Elvis Presley, Wayne Newton, and Hank Williams, Jr. have performed in the Auditorium and it is currently home to the Big Spring Symphony Orchestra. more than 50,000 visitors from all 50 states and over 30 foreign countries.



# HOTEL SETTLES

Sitting on what once was railroad property, the corner of 3rd Street and Runnels has been many changes over the years. During the oil boom of the late 1920's W.R. Settles bought the property and began construction of this historic building. The cost of original construction was reported to be \$500,000- a fortune in those days. Opening in October of 1930 to great fanfare and support by the local community; the Settles Hotel was often compared to the finest hotels of its day. In its prime, The Settles hosted dignitaries and celebrities such

as Elvis Presley, Lawrence Welk, Herbert Hoover, and many others. Purchased by a home-town businessman in 2007, the Hotel Settles has undergone extensive renovations. The hotel features historic and luxury hotel rooms, restaurant, bar, and meeting facilities.

# THE BIG SPRING

The historic spring, which is the namesake of the town is located in Comanche Trail Park. See more information on the Historic Spring Restoration on page 32.

A large banner for "Historical Sites" featuring a background image of a rusted metal sign for "The Spring" in a natural setting. A large white arrow graphic points from the right towards the text. The text is overlaid on a semi-transparent white box.

# HISTORICAL SITES

**BIG SPRING MUNICIPAL AUDITORIUM**  
310 East Third Street  
432.264.2323

**HOTEL SETTLES**  
200 East Third Street  
432.267.7500

# 17 STATE MARKERS

DESIGNATED BY THE TEXAS HISTORICAL COMMISSION

- Big Spring State Park on Old Comanche War Trail  
FM 700 at State Park
- Route of Marcy's Trail  
Historic Spring in Comanche Trail Park
- Moss Spring | Private Property
- W.T. (Uncle) Bud Roberts, 1849-1940  
Moss Creek Lake Road
- The Seventh Earl of Aylesford - Cosmopolitan Hotel  
NW Corner of Third and Runnels
- First Permanent Building in Big Spring  
Inside Business at 119 Main Street
- The J&W Fisher Company  
South end of Big Spring Furniture Co. 110 Main
- First Christian Church | 911 Goliad
- Potton House | 200 Gregg Street
- W.P. Soash, Colonizer  
County Road #54, off FM 1785, 6 miles NW of Vealmoore
- First Commercial Oil Well in Howard County  
13 miles S. Forsan
- Howard County formed from Young and Bexar Territories  
3.8 miles South of Big Spring on Hwy 87
- Moore School  
3.7 miles North on Hwy 87 then 1 mile West
- Settles Hotel | 3rd and Runnels
- Masonic Cemetery - Mt. Olive | Snyder Hwy 350
- First National Bank | Fourth and Main
- St. Thomas Catholic Church | 605 N. Main



# COUNTY MARKERS

## 27 COUNTY MARKERS

DESIGNATED BY THE HOWARD COUNTY HISTORICAL COMMISSION

1884 Howard County Courthouse

1884 A Historical Big Spring Meat Market

1899 Opera House Company

1899 Telephone Company

1900 Big Spring Hardware Company

1909 First Self-Propelled Fire Engine in Texas

1911 Centennial of St. Thomas Catholic Church

1919 Chamber of Commerce

1928 Ritz Theater

1932 Municipal Auditorium

1942 The Record Shop 1946 Carters Furniture

1891 Coahoma Baptist Church

1899 First Presbyterian Church of Coahoma

1906 The G.L. (Bud) Brown Home





EST  
1882

BIG SPRING

11 12 1  
10 9 8 7 6 5 4  
3 2  
BIG SPRING  
MADE IN USA

WELLS  
FARGO

# HISTORIC SPRING

The Big Spring CVB recently completed a major renovation project at our Historic Spring located in Comanche Trail Park. The focus of the projects are educational components that will inform visitors about the significant history of the Spring, not only to the development of Big Spring, but to areas west of Big Spring.

From a historical standpoint, the “big spring” of Howard County is one of the most significant springs in Texas, and arguably, the United States. Studies have found that the spring was an important watering hole in West Texas prior to man setting foot in the region. Mastodon, woolly mammoth, saber-toothed tiger, and the remnants of many other now extinct species have been found near the spring, suggesting that this was an important watering hole for many thousands of years. Cabeza De Vaca documented he visited the site in 1535. The site was a meeting place for the Comanche Tribes as they set out on the Great Comanche War Trail. The site is designated by the State of Texas as a Historical Site where Captain Randolph Marcy stopped on his journey from Ft. Smith Arkansas to El Paso. The Spring became so important to the development of the railroad in West Texas, many cities in the area were formed along the rail line. The Bankhead Highway was eventually built adjacent to the rail line and ultimately became the route of Interstate 20.

The project uses construction materials featuring native stone and CCC style architecture that will blend with the construction used in the park area. It is fully handicapped accessible and includes a new plaza area with seating capability for 1,000+ with full electrical hookups and performance stage. A widened trail for access has been added along with additional lighting and security cameras as well as emergency vehicle access. New low-maintenance planting areas are included as well as thinning in some areas for visibility, appeal and safety. Two new observation decks overlooking the spring have been added with artificial outflows to create two areas of waterfalls. Eight large (5 ft. x 10 ft.) story boards made of engraved corten metal with a limestone block background are displayed in the plaza area. These story boards depict the significant historical periods of Big Spring History and are surrounded by native plants. There is a walking area devoted to the Native American history of our area and a replica of a ranch dugout has been added to represent the importance of our ranching heritage.

We feel the importance of the Spring should be shared with visitors and local residents and our project will make this site a stopping point for many who pass through.





POPS IN THE PARK



# HISTORIC SPRING



### The 20th Century

The city of Big Spring has long been known as the "Crossroads of West Texas" due to the numerous trails that radiated out from the spring. Many of those ancient trails are now paved highways or rail lines. Those that remained allowed Big Spring to be the largest community in West Texas for many years during the late 19th and early 20th century.

Other communities developed along the rail lines, which proved to be a double-edged sword. While they provided a means of transportation, they also meant that the city of Big Spring would not be the largest in the region. The city of Big Spring would not be the largest in the region because of the rail lines. The city of Big Spring would not be the largest in the region because of the rail lines. The city of Big Spring would not be the largest in the region because of the rail lines.

Big Spring continued to be the "Crossroads of West Texas" until the late 19th century. In 1914, the Fort Worth Highway was developed to connect Washington, D.C. with San Diego, California. This important highway followed the rail lines in Texas and soon after, traveled through Big Spring and on to El Paso, largely following Murray's route 27 years earlier. The railroad highway continued to be the major line, which kept open the United States until 1930, when interstate 20 was developed largely along the same route.

In the 1920s, Big Spring flourished with growth. One of the young oil men in the area, the Dr. Henry Cole, arrived in 1920 and at the time was the father figure between El Paso and Ft. Worth. When the Great Depression struck in the 1930s, the city began to lose its population due to the oil and gas industry falling west. All many of the original general store owners left the area, and the spring fell into a depression.

With the onset of World War II, the United States desperately needed soldiers both generally good weathered to train them. On April 28, 1942, the United States Army Air Force opened Big Spring Army Air Field as a primary training facility for pilots. In 1942, the field was renamed as the Air Force Base in memory of Lt. James L. Waddy, a Big Spring native killed in the crash of the P-40 Mustang off the coast of Japan in 1941. Over 5,000 pilots were eventually trained at the base, which closed on January 24, 1945.

In 1950, the Big Spring Veterans Administration Medical Center was established to serve regional veterans. It provides primary and secondary healthcare for former service men and women in 12 counties. Products of veterans are sold by the VA Hospital.

Today, Big Spring is an energy and pipeline center at the elbow of one of the world's most important oil fields, the Permian Basin. The present economy is based in manufacturing, oil field service, separation, and fuel refinery. Overhead energy sources such as wind turbine fields have changed the landscape of the surrounding countryside.

As Big Spring moves forward into the 21st century, the city has also looked to the past and the importance of the spring that gave the city its name.

# BIG SPRING

# Annual Events

## JANUARY

Fraternal Order Of Eagles Chili Cook-Off  
Hangar 25 Silver Wings Ball Museum Fundraiser

## FEBRUARY

Big Spring Symphony Orchestra Concert  
Run2Love2Run 5K

## MARCH

Big Spring Prospector Club Gem & Mineral Show  
Greater Big Spring Rotary Club Kids Trout Fishing Contest  
Tastes Of The Symphony  
Pints For Polio

## APRIL

Big Spring Symphony Orchestra Concert  
Chamber Of Commerce Health Fair  
West Texas Disc Golf Champions  
Howard College Rodeo  
Keep Big Spring Beautiful Trash-Off  
Hospice House Butterfly Release & Family Celebration  
State Park "Master The Mountain" Run/Walk  
Cars, Stars and Handlebars

## MAY

Cinco De Mayo Celebration  
American Cancer Society-Relay For Life  
Hangar 25 Memorial Day Celebration

## JUNE

Hangar 25-Kids Club Summer Workshop  
Stargazing At Scenic Mountain State Park  
Cowboy Reunion & PBRCA Sanctioned Rodeo  
Juneteenth Celebration  
Downtown Big Spring "Funtastic Fourth Festival"



## JULY

“Pops In The Park” Patriotic Music and Fireworks

## AUGUST

United Way Kick-Off

## SEPTEMBER

Comanche Warrior Triathlon  
Big Spring Symphony Orchestra Concert  
Howard County Fair

## OCTOBER

Pioneer Pumpkin Patch at the Potton House  
Big Spring Police Association Masquerade Ball  
Ag Expo  
St. Lawrence Fall Festival  
Mustang Draw Woodcarvers Club Show & Sale  
Annual Prairie Dog Fly-In Breakfast

## NOVEMBER

Alzheimer's Candlelight Vigil  
Christmas Tree Forrest at the Heritage Museum

## DECEMBER

Big Spring Herald Christmas Parade  
First United Methodist Church “Living Christmas Tree”  
Howard College Luminaria  
First Church Of Nazarene Drive-Thru Nativity  
Comanche Trail Festival Of Lights  
Big Spring Symphony Orchestra Concert





## THE REST IS HISTORY



*Settles*  
GRILL

**S**

PHARMACY  
BAR & PARLOR

HOTEL  
SETTLES

Located in the heart of Big Spring between Midland and Abilene, **HOTEL SETTLES** welcomes guests with true Texas hospitality and a touch of relaxed elegance, from the opulently restored Grand Ballroom and Lobby to its 65 comfortably appointed guest rooms and suites. The historical art deco oasis has eight dedicated function spaces and is the premier West Texas location for retreats, corporate meetings, weddings, receptions, galas, reunions, quinceañeras and special events. All accommodations include a number of luxury amenities and access to:

- SETTLES GRILL
- PHARMACY BAR & PARLOR
- POOL & JACUZZI
- FITNESS CENTER
- 24-HOUR BUSINESS CENTER
- COMPLIMENTARY WIFI

200 EAST THIRD STREET · BIG SPRING, TEXAS 79720  
(432) 267-7500 · HOTELSETTLES.COM



## **LOCATION**

113 & 115 East Third Street  
Big Spring, TX 79720

## **CONTACT**

Toll Free | 866.430.7100  
Phone | 432.263.8235  
Fax | 432.267.7431  
Email | [info@visitbigspring.com](mailto:info@visitbigspring.com)  
[www.VisitBigSpring.com](http://www.VisitBigSpring.com)